



Mayo Clinic Minnesota USA



Mahani Aljanaahi

Journal Club

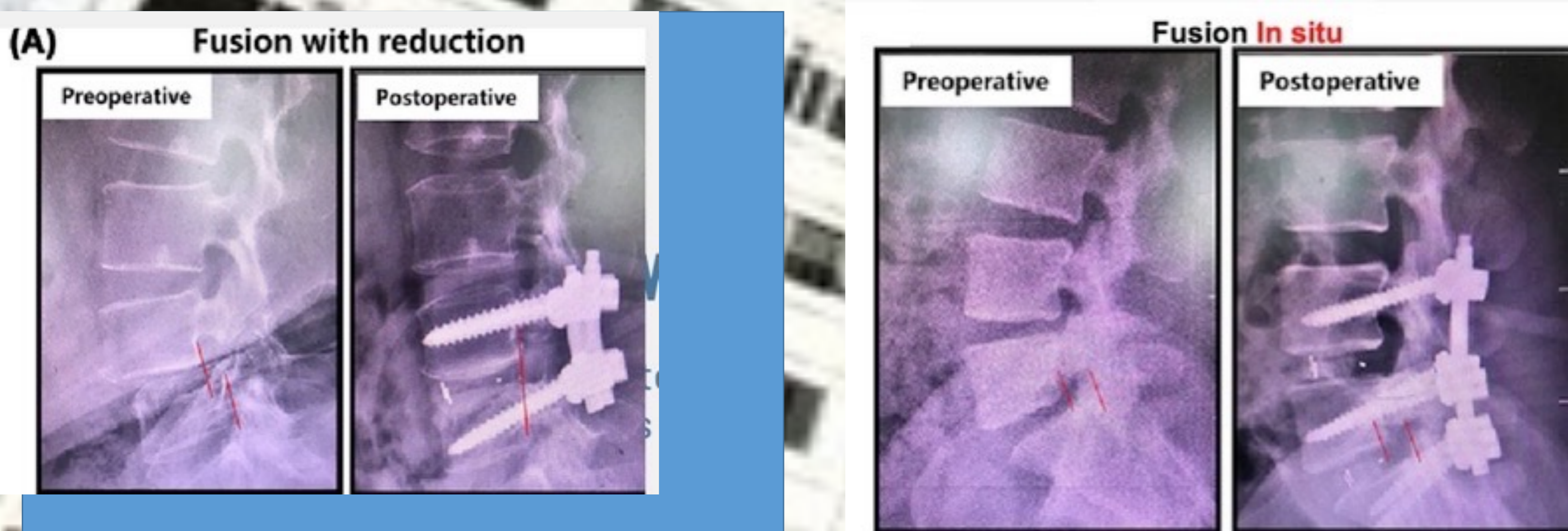
Why Mayo Clinic?

Conducting research in Mayo Clinic's Neuroinformatics is an area that allows researchers to investigate today's medical mysteries on spinal cord-related diseases, generating new knowledge and translating discoveries into therapies to advance patient care

The Mayo Clinic neuroinformatics lab conducts a journal club every week where one of the team members can present a topic they are passionate about. I was able to share my knowledge of Isthmic Spondylolisthesis, a spinal condition in which one vertebra slips forward over the vertebra below, caused by the osseous discontinuity of the vertebral arch at the pars interarticularis (spondylolysis).

Focus of the research

The focus of research in the lab is Spinal cord injury. I was lucky enough to conduct a meta-analysis to compare different results between in situ fusion and reduction group procedures on isthmic spondylolisthesis. This will allow us to determine which of the two techniques serves better patient outcomes.



Beyond the Lab

Minnesota has long been known for its **above-ground beauty** with its acres of forests, shimmering lakes, and colorful wildflowers, but there's also beauty to be found underground. I took advantage of the beautiful nature in Rochester and went for a trail ride in one of their local barns.



The team

